

Annual Report 2021

SUMMER 2022 | A PUBLICATION OF SECOND HARVEST COMMUNITY FOOD BANK



IN THIS ISSUE

Page 2
LETTER FROM THE CEO

Page 4-5
FACTS FLYING IN FROM 2021

Page 6
FINANCIAL REPORT

Page 8
OUR PROGRAMS AT WORK

**See Pages 4 and 5
to find out how YOU
Made the Difference!**



Second Harvest Community Food Bank
is a member of Feeding America and Feeding Missouri.

Letter from the CEO

Dear friends of Second Harvest,

BOARD OF DIRECTORS:

Monica Walker, <i>Chair</i>	Kevin Kelly
Christel Gollnick, <i>Vice Chair</i>	Becky Ritchey
Bryan Carter, <i>Immediate Past Chair</i>	Amy Ryan
Gerri Householder, <i>Secretary</i>	Carolyn Sollars
Kenny Miller, <i>Treasurer</i>	Donna M. Wilson
Andrea Armfield	Timothy Wymes
Katie Jonas	

STAFF:

Chad Higdon, *Chief Executive Officer*
 T.J. Bauer, *Chief Operating Officer*
 Michelle Fagerstone, *Chief Development Officer*
 Kassandra Norris, *Director of Programs*
 Megan Stickley, *Director of Logistics*
 Jackie Auxier, *Children's Initiatives Coordinator Lead*
 Caitlin Dillon, *Senior Initiatives Coordinator*
 Cecilia DeLeon, *Community Outreach Coordinator*
 Sydney Duke, *Children's Initiatives Coordinator*
 Andrew Foster, *Volunteer Coordinator*
 Ashten Gilliard, *Inventory Control Coordinator*
 Carissa Keyes, *Finance/Admin Manager*
 Dustin Knapp, *Driver*
 Steven Krebs, *Driver*
 Kim Maddox, *Housekeeping*
 Payton Morgan, *SNAP Coordinator*
 Mackenzie Osborn, *Communications Coordinator*
 Deb Ramey, *Community Outreach Coordinator*
 Corey Ripper, *Food Sourcing Coordinator*
 Melissa Ryser, *Development Specialist*
 Jennifer Smith, *Executive Assistant*
 Gisselle Vides, *Warehouse Operations Lead*

The past couple of years have challenged us all to redefine the way we think, react, participate, and contribute to the environment surrounding our lives. Second Harvest has relied on our organization's core values of accountability, collaboration, dedication, integrity, and respect to guide our work and meet the many food needs during this time of crisis. **The challenges we have faced this past year did not deter the passion of our donors, volunteers, Partner Agencies, staff, and board of directors to rise up and help us fight hunger.**

In FY 2021, Second Harvest celebrated 40 years of providing food to our neighbors. The organization distributed a record number, 11.4 million pounds of food across Northwest Missouri and Northeast Kansas. While this demonstrates the need, it also shows how dedicated our area is to helping its neighbors.

“Your support this past year was essential to our fight against hunger in Northwest Missouri and Northeast Kansas.”

For people facing hunger, hope is receiving fresh produce, the smile of a nourished child, knowing they have food in the pantry. Your support this past year was essential to our fight against hunger in Northwest Missouri and Northeast Kansas. Thank you for being part of our incredible journey and we look forward to including you in the next chapter of our story.




Chad Higdon
 CEO of Second Harvest
 Community Food Bank







OUR MISSION

To provide nourishment and hope to the hungry while engaging and empowering the region in the fight to end hunger.

OUR VISION

A hunger-free Northwest Missouri and Northeast Kansas.

Newsletter is produced by Second Harvest Communications Department. For questions, please contact Mackenzie Osborn at 816.244.8677 ext. 219.

-  Facebook.com/sec.harv
-  Twitter.com/Second_Harvest
-  @secondharvestcfb
-  @secondharvestcfb

Employee Spotlight, Meet Dustin

If you've ever been to a Fresh Mobile Pantry, you might recognize the face of one of our longest employees, Dustin Knapp. Dustin has been a Second Harvest employee for almost ten years, going out into the community and delivering fresh food to those in need. Over time, Dustin has gotten to know lots of different people through his work, but what do you know about him?

Q What does a day in your life look like?

A A lot of driving to different Mobile Pantry sites to drop off and pass out fruit and protein. The distribution normally lasts from 10am to 12pm daily.

Q What's your favorite thing about your position?

A Working with others to help the people that are in a bind, trying to help them get back on their feet.

Q What's the best lesson you've learned from working at Second Harvest?

A I have learned to stay humble and not judge others because anyone can fall through the cracks.

Q What is one memory that sticks out in your time here?

A Working for Second Harvest Community Food Bank for almost 10 years gave me many memories. I have met a lot of good people, some that I have formed long friendships with and others that I see out and about sometimes.

Q What do you like to do on your days off?

A On my days off, I love hanging out with my family. Doing stuff with my wife Heather and two daughters, Katherine and Abriel.

Q What has been your best day at work?

A My best days on the job are when everything runs smoothly at the mobiles and we have plenty of volunteers. It's nice when everyone can get together and be happy working together to make a difference.

So next time you see a Second Harvest truck honking at the cows, be sure to give Dustin a wave!



Trucking Into the New Year

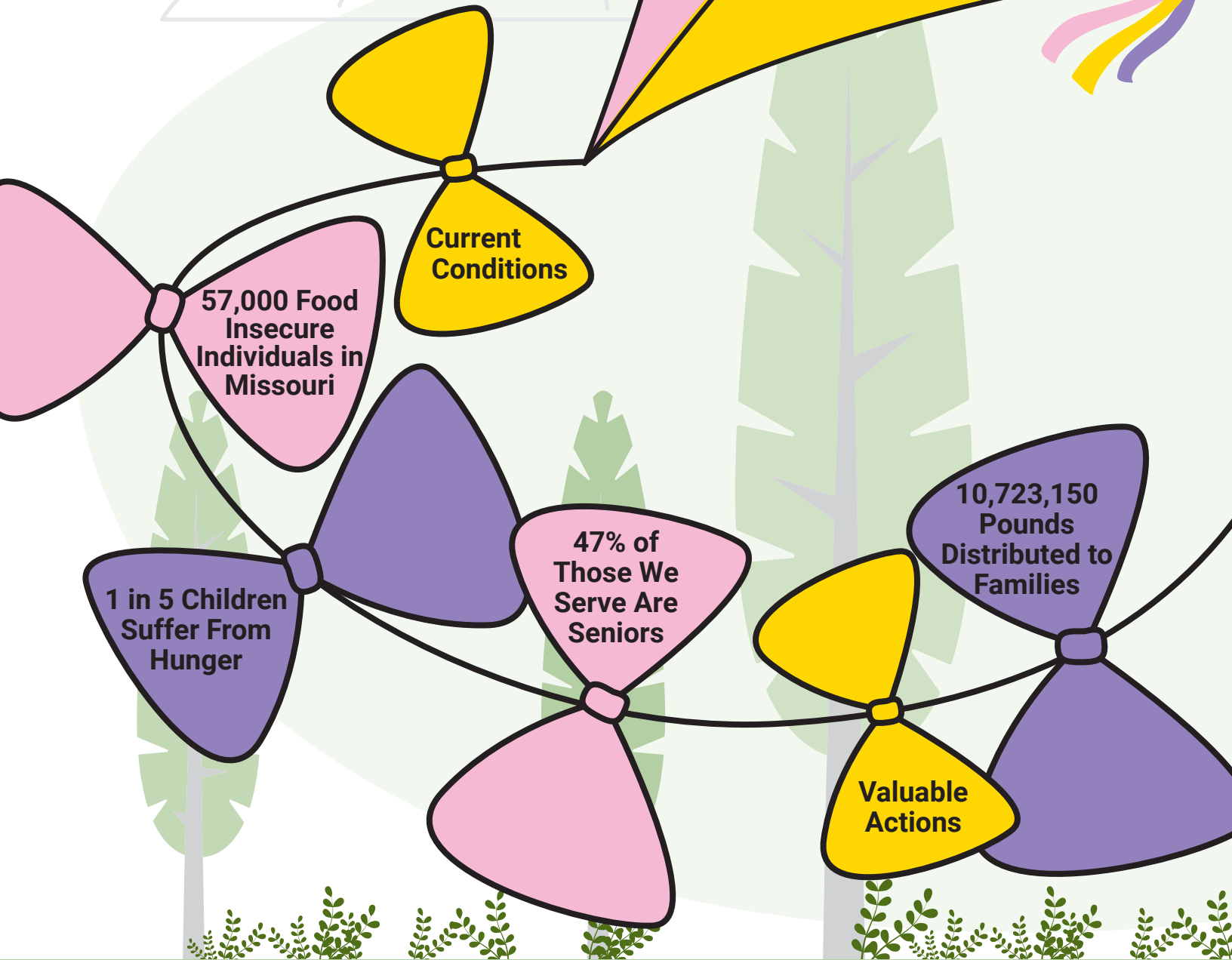
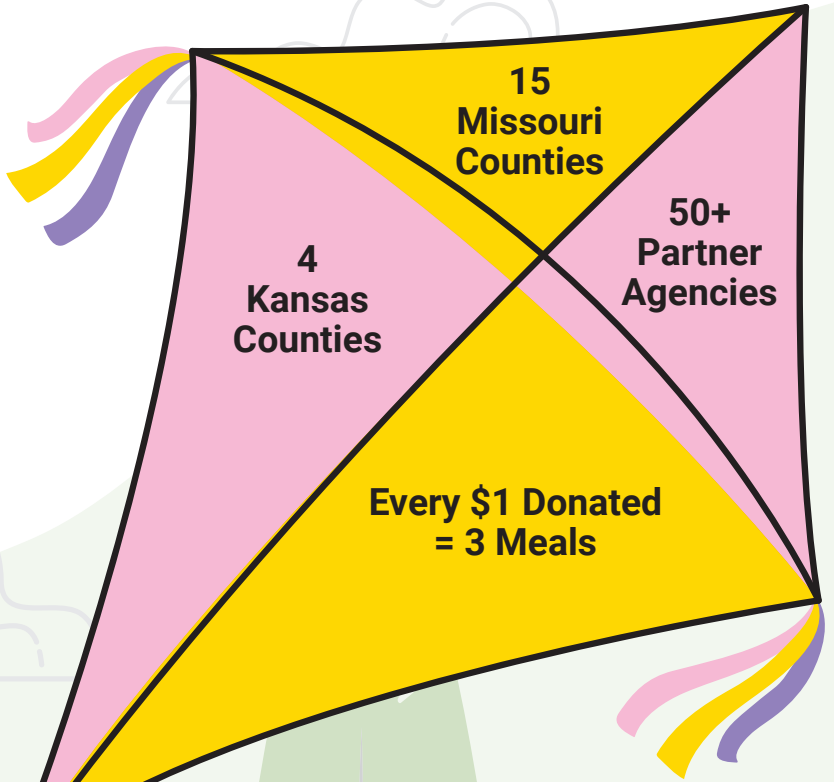
Much like the rest of the world, Second Harvest saw the severe impact of the pandemic first-hand in the people we helped. One result of COVID-19, was the immediate need to bring more food into our rural communities than we had ever done before. People who had previously never faced food insecurity became jobless overnight and had to figure out where to turn for help. Thanks to the USDA Farmers to Families Food Boxes and people's eagerness to help their neighbors through individual food donations, Second Harvest was able to increase the amount of Fresh Mobile Pantries we conducted from 26 to 80 a month during the height of the pandemic. The number of pounds distributed skyrocketed to over 4 million additional pounds.

The hardest part of working mobiles, according to Second Harvest intern Trenton Prather is "Seeing all of the people that are still working and still trying, but they are struggling anyway. It's good to be able to give people a sense of hope you're not by yourself".

The USDA program ended on May 31, 2021. Second Harvest adjusted to 40 Fresh Mobile Pantries a month. The need is still there, with over 57,000 still needing food assistance in our region. You can help us by volunteering or donating at www.shcfb.org.



Facts Flying in from 2021





**180,645
Meals
Distributed to
Children**

**1,200
Senior Box
Recipients**

**Over 94,000
Volunteer
Hours**

**\$30,000
in Partner
Agency
Capacity
Grants**

Financial Report *FY 2021*

Support and Revenue	
In Kind Contributions	\$20,360,353
Cash & Cash Equivalents	\$4,727,119
Total Revenue & Support	\$25,629,023
Expenses	
Program & Distribution Services	\$24,754,767
Fundraising	\$356,707
Management	\$238,042
Total Expenses	\$25,349,516
Assets	
Net Assets, Beginning of Year	\$3,890,077
Net Assets, End of Year	\$4,169,584
Change in Net Assets	\$279,507

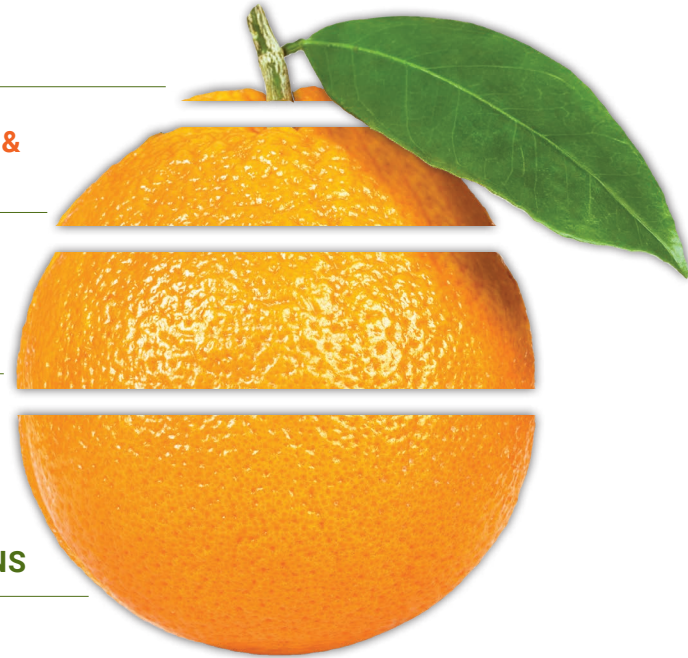
Funding Sources

EVENTS
(3.2%)

FOUNDATIONS & GRANTS
(19.9%)

INDIVIDUALS
(27.6%)

ORGANIZATIONS
(49.3%)

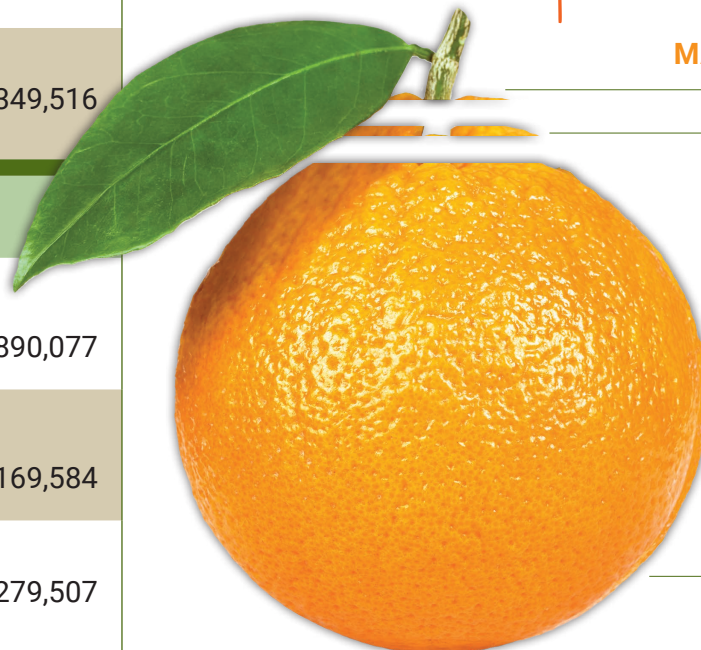


Expenses

MANAGEMENT/GENERAL
(.94%)

FUND DEVELOPMENT
(1.41%)

**PROGRAMMING/
FOOD DISTRIBUTION**
(97.65%)



*Audited statements are available upon request

YOU Make the Impact

American Family Insurance Dreams Foundation Inc.
Anonymous
Bayer
Bluegrass Bettering Our Community
Boehringer Ingelheim Vetmedica
Brad and Kim Fowler
Brooks Family Foundation
City of Leavenworth
Clinton County R-III School District
CNH Industrial America LLC
Commerce Bank
Community Foundation of Northwest Missouri
Doniphan County Kansas
Eagle Radio
Edward J. Trapp
Enterprise Holdings Foundation
Eva and Ken Nickell
Evergy – Corporate
Farm Credit Services Financial
Feeding Missouri
Frank and Salli Freudenthal
Gallatin R-V School District
Gary Hyder
Global Impact
Grace Evangelical Church
Greater Kansas City Community Foundation
Hallmark Cards, Incorporated
Harrison County Food Pantry
Hillyard Companies
Hofheimer Charitable Trust
Jerry and Wallis Campbell

John Rauch Trust
Kansas Health Foundation
Karen Grace
Land O'Lakes, Inc Foundation
Matthew and Angela Honson
Michael and Luz Rayner
Missouri American Water
National Beef Leathers, LLC
News-Press Gazette Company
Norman Dawson
Partnership for a Healthier America
Pony Express Warehousing
Rolling Hills Auto Plaza
Ron Knight
Scott and Gita Sprague
Sisters of Charity of Leavenworth
South St. Joseph Progressive Association
St. Jo Frontier Casino
Sunflower Foundation
Sunshine Electronic Display Corporation
Susan and Robert Roth
The GoodCoin Foundation
Tonganoxie USD #464
Unified Scool District No. 415 Hiawatha
US Bank Wealth Management



Thank You, Major Donors



Our Programs At Work



Backpack Buddies

Provides a healthy breakfast, lunch, and snack for children each weekend during the school year. For more information email jauxier@shcfb.org.



Campus Cupboards

A school based emergency pantry available to children at select locations. Your assistance helps students choose healthy foods to take home. For more information email sduke@shcfb.org.



No Hunger Summer

Provides weekday lunches for children while school is no longer in session to help alleviate hunger in the summertime. For more information email jauxier@shcfb.org.



Kate's Cafe

Serves at-risk children evening meals or snacks at select locations. For more information email jauxier@shcfb.org.



Senior Boxes

Gives a monthly provision of healthy food to seniors in need. It is available to qualified individuals over the age of sixty. For more information email cdillon@shcfb.org.



Harvest Healing

Second Harvest provides complete nutrition drinks to low income residents undergoing medical treatment. For more information email jsmith@shcfb.org.



Close the Gap

Our Community Outreach Coordinators provide application assistance for families to enroll in the Supplemental Nutrition Assistance Program (SNAP). For more information email pmorgan@shcfb.org.



Fresh Mobile Pantries

These drive-through pantries distribute fresh produce and lean protein daily to food insecure individuals across Missouri and Kansas. For more information email dramey@shcfb.org.



Partner Agencies

These stationary agencies provide food throughout the month to families across our 19 counties. For more information email cdeleon@shcfb.org.